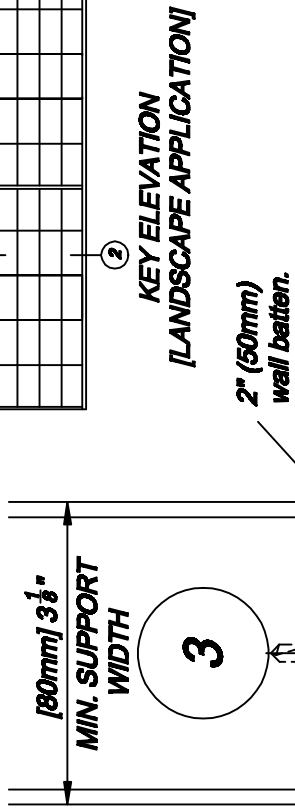
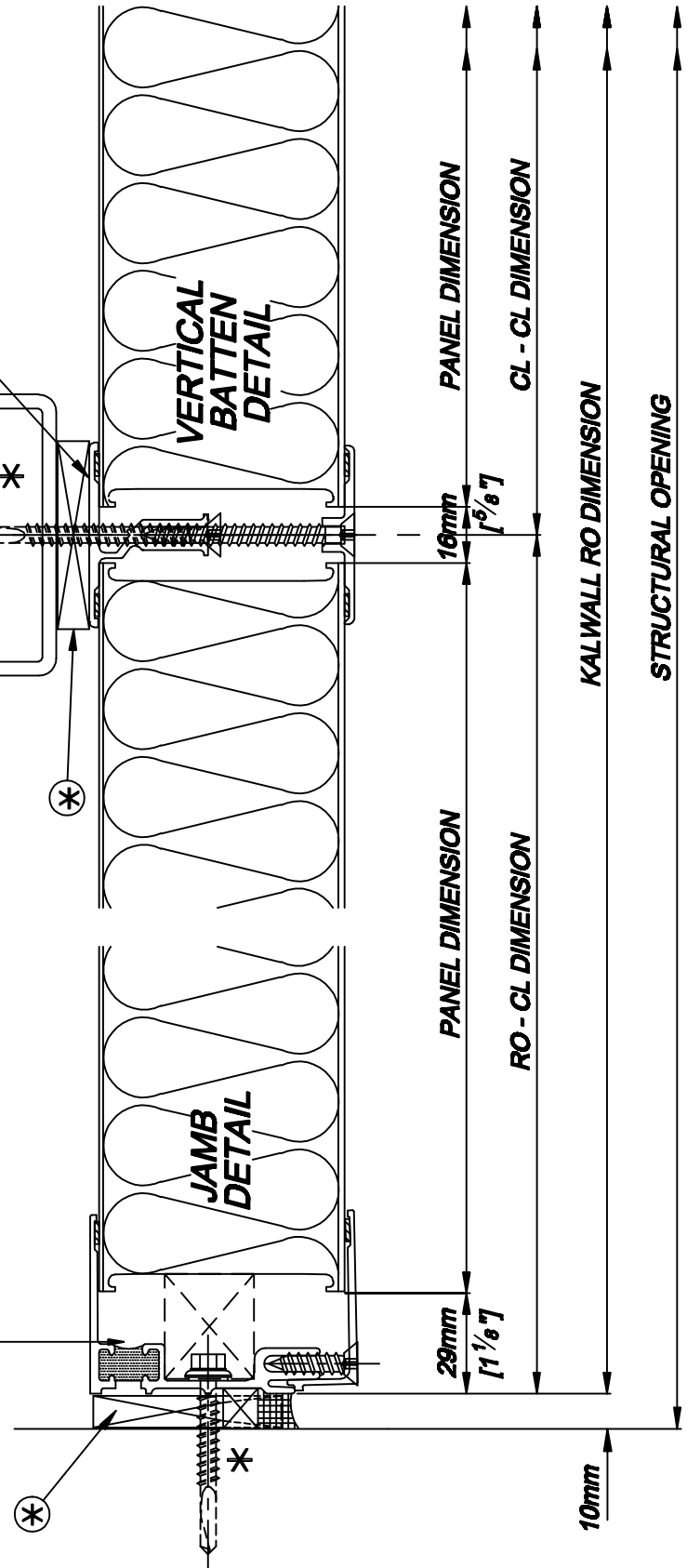


* DENOTES CONTINUOUS SUPPORT STRUCTURE NOT BY KALWALL INSTALLER
 (*) DENOTES ADJUSTMENT SHIMS TO BE SUPPLIED BY KALWALL INSTALLER TO ACCOMMODATE SECONDARY STEEL TOLERANCES, ENGINEER TO ADVISE TOLERANCES.



Note: 2 aluminium or douglas fir jamb spacers blocks to be fastened to jamb near head and sill. For multiple panel RO's blocks are to be tight to panels as shown.



**KALWALL STANDARD JAMB & VERTICAL BATTEN [2"]
THERMALLY BROKEN WALL PANEL DETAILS**

Stokes Systems Ltd. 1, Barstead road, Purley, Surrey. CR6 3EB
 Tel: 020 8990 7067 Fax: 020 8990 6707 Email: design@stokes.co.uk

This drawing is copyright and may not be reproduced in whole or in part without written consent of Stokes Systems Limited.

STOKES
STOKES SYSTEMS LTD

Detail Ref.	
08T-STD/06	
Date. Jan. 2004	Rev. D
System. 08T	Scale. 1=2