

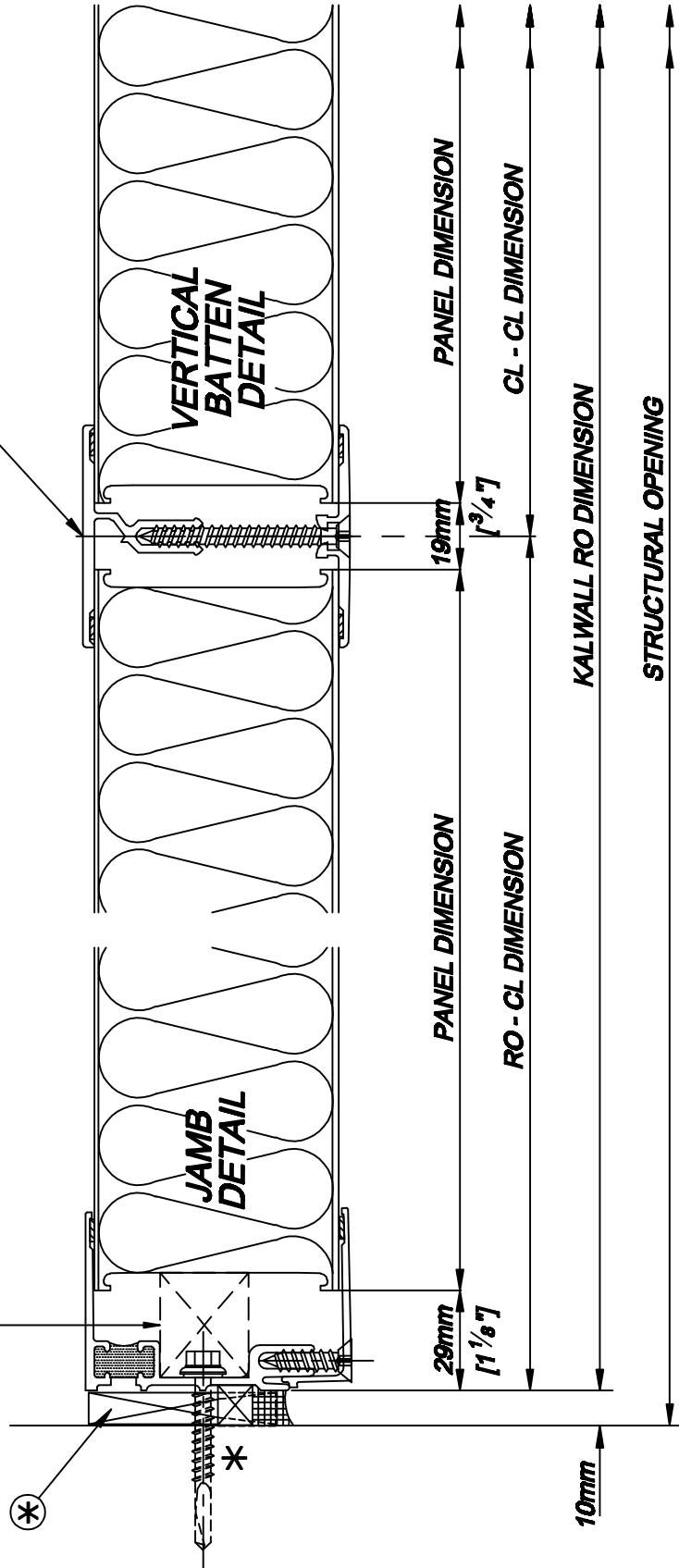
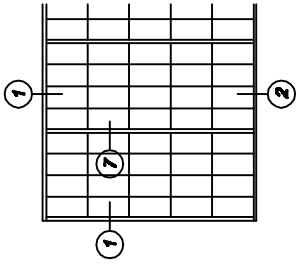
\* DENOTES CONTINUOUS SUPPORT STRUCTURE NOT BY KALWALL INSTALLER  
 (\*) DENOTES ADJUSTMENT SHIMS TO BE SUPPLIED BY KALWALL INSTALLER TO ACCOMMODATE SECONDARY STEEL TOLERANCES, ENGINEER TO ADVISE TOLERANCES.

Note: 2 aluminium or douglas fir jamb spacers blocks to be fastened to jamb near head and sill. For multiple panel RO's blocks are to be tight to panels as shown.

7

KEY ELEVATION  
 [PORTRAIT APPLICATION]

64mm [2 1/2"] wall batten.



**KALWALL STANDARD JAMB & VERTICAL BATTEN [2 1/2"] THERMALLY BROKEN WALL PANEL DETAILS**

Stokes Systems Ltd. 1, Banstead road, Purley, Surrey. CR6 3EB  
 Tel: 020 8800 7067 Fax: 020 8800 6707 Email: design@stokes.co.uk

This drawing is copyright and may not be reproduced in whole or in part without written consent of Stokes Systems Limited.

**STOKES**  
 STOAKES SYSTEMS LTD

Detail Ref.

**08T-STD/08**

Date.	Jan. 2004	Rev.	D
System.	08T	Scale.	1-2