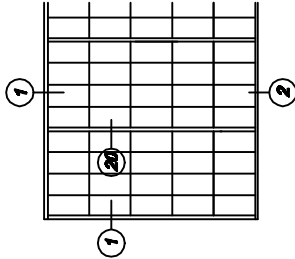


* DENOTES CONTINUOUS SUPPORT STRUCTURE NOT BY KALWALL INSTALLER
 (*) DENOTES ADJUSTMENT SHIMS TO BE SUPPLIED BY KALWALL INSTALLER TO ACCOMMODATE SECONDARY STEEL TOLERANCES, ENGINEER TO ADVISE TOLERANCES.

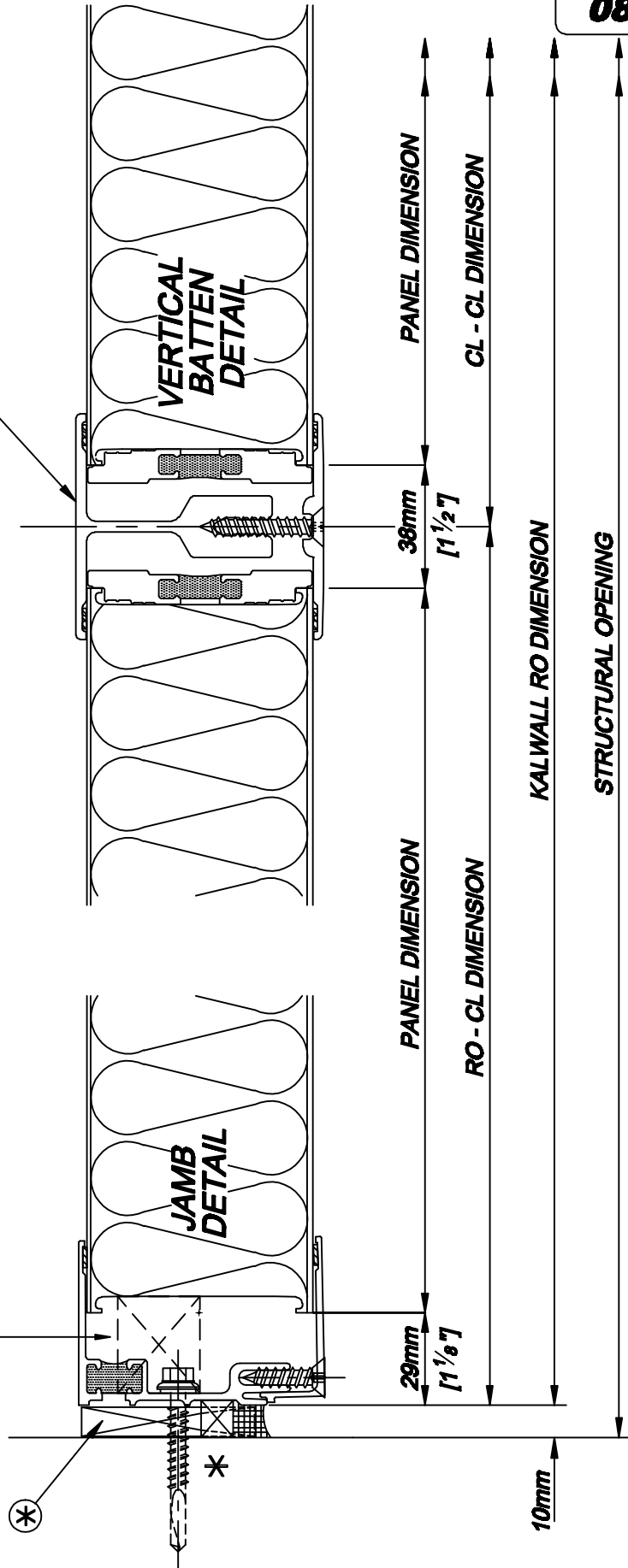
Note: 2 aluminium or douglos fir jamb spacers blocks to be fastened to jamb near head and sill. For multiple panel RO's blocks are to be tight to panels as shown.

2 3/4" (70mm) TB structural tee batten.



20

1



KALWALL STANDARD JAMB & VERTICAL BATTEN (2")

KALWALL STD. JAMB & STRUCTURAL BATTEN [2 3/4"] THERMALLY BROKEN WALL PANEL DETAILS

Stokes Systems Ltd. 1, Banstead road, Purley, Surrey. CR6 3EB
 Tel: 020 8990 7067 Fax: 020 8990 8707 Email: design@stokes.co.uk

This drawing is copyright and may not be reproduced in whole or in part without written consent of Stokes Systems Limited.

STOKES
 STOAKES SYSTEMS LTD

Detail Ref.	
08T-STD/16	
Date. Jan. 2004	Rev. D
System. 08T	Scale. 1=2